

PALO ALTO, CALIFORNIA

AL-9216 (FAA)

20030

APP CRS	Rwy Idg	2443
322°	TDZE	7
	Apt Elev	7

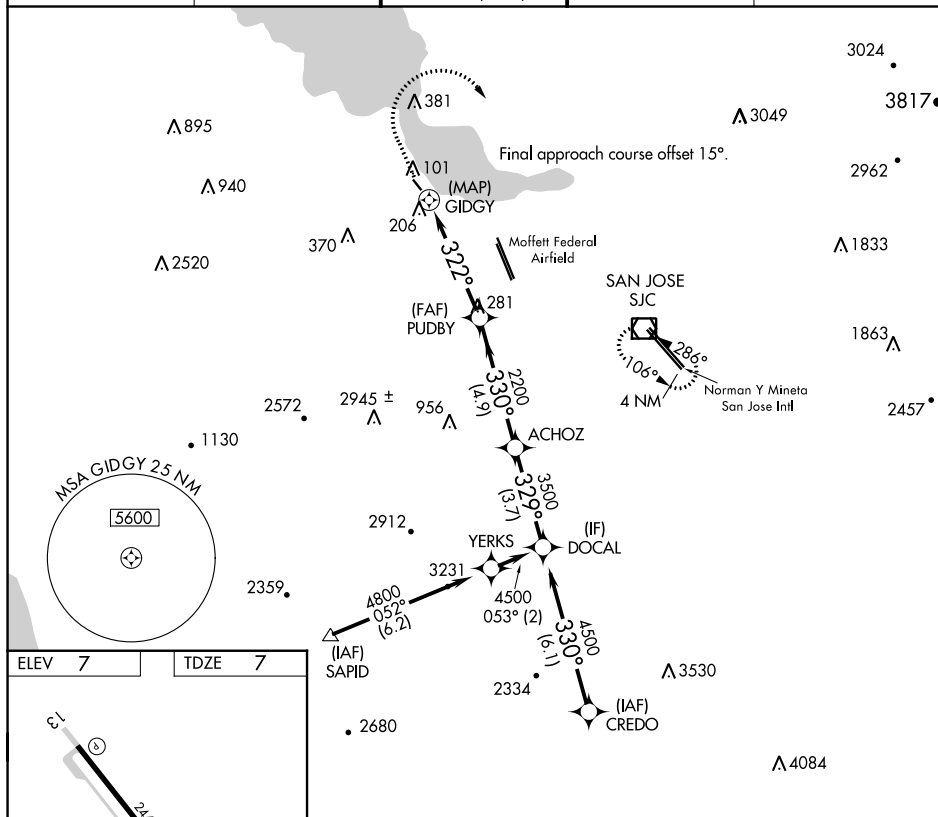
RNAV (GPS) RWY 31
PALO ALTO (PAO)

RNP APCH.

T Circling NA southwest of Rwy 13-31. Rwy 31 helicopter visibility reduction below
A 1 SM NA. Procedure NA at night. When control tower closed, use Norman Y
Mineta San Jose Intl altimeter setting and increase all MDA's 40 feet.

MISSED APPROACH: Climb to 1400 then climbing right turn to 3000 direct SJC VOR/DME and hold.

ATIS 135.275	NORCAL APP CON 121.3 270.35	PALO ALTO TOWER* 118.6 (CTAF)	GND CON 125.0	UNICOM 122.95
------------------------	---------------------------------------	--	-------------------------	-------------------------



The figure illustrates a flight plan for a VFR flight. It includes a map of the flight area, a flight plan diagram, and a table of flight plan data.

Map: Shows the flight area with a runway (RWY 13-31) and a tower (TWR). The flight path is indicated by a dashed line.

Flight Plan Diagram: Shows the flight path from the start of the flight (0.5 NM) to the end (4.9 NM). The flight path includes a turn at 322° and a climb to 3500 feet. The flight plan diagram also shows the flight path from the start of the flight (0.5 NM) to the end (4.9 NM).

Table:

CATEGORY	A	B	C	D
LNNAV MDA	460-1	453 (500-1)		NA
C CIRCLING	460-1 453 (500-1)	520-1 513 (600-1)		NA

PALO ALTO, CALIFORNIA

Amdt 2 10OCT19

37°28'N-122°07'W

PALO ALTO (PAO)

RNAV (GPS) RWY 31

SW-2, 12 AUG 2021 to 09 SEP 2021