

WAAS CH 69513 W31A	APP CRS 312°	Rwy Idg 4825 TDZE 82 Apt Elev 85
--	------------------------	---

RNAV (GPS) Z RWY 31

SALINAS MUNI (SNS)

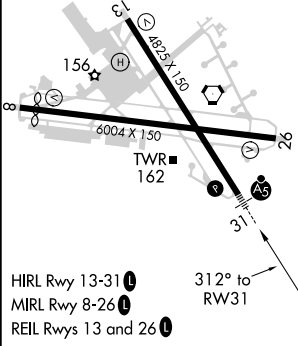
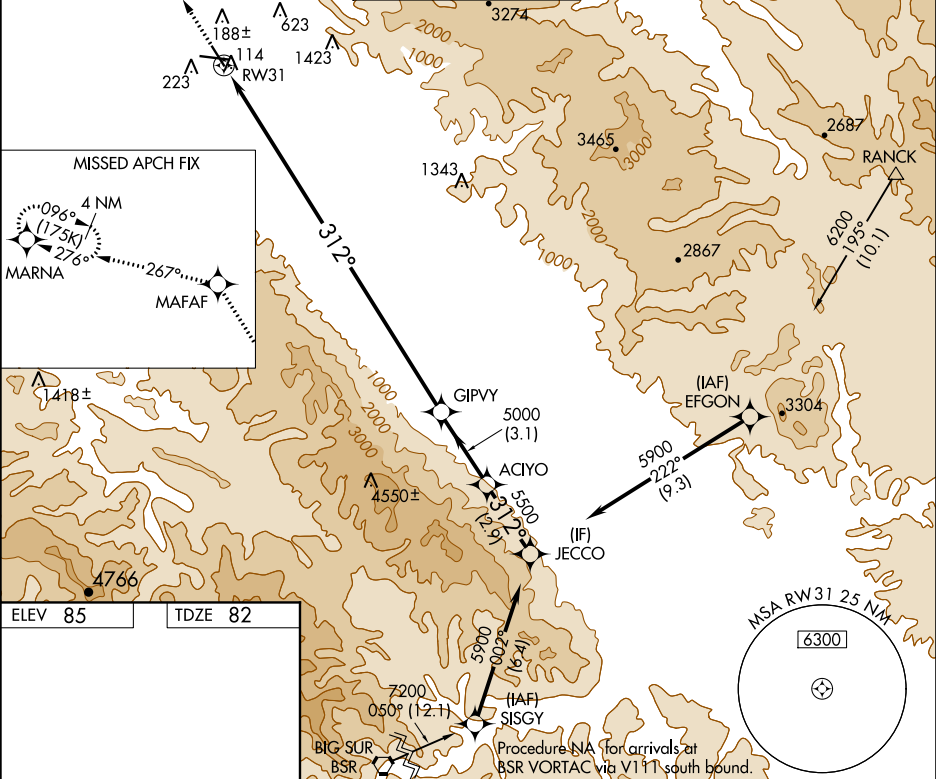
⚠

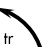



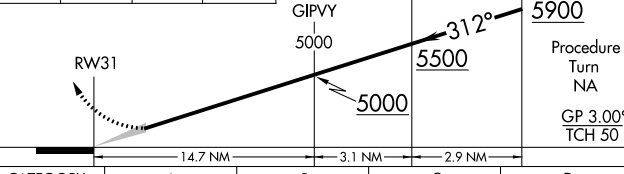
Baro-VNAV NA when using Monterey Rgnl altimeter setting. For uncompensated Baro-VNAV systems, LNAV/VNAV NA below -15°C (5°F) or above 50°C (122°F). DME/DME RNP-0.3 NA. When local altimeter setting not received, use Monterey Rgnl altimeter setting and increase all DA 53 feet and LNAV/VNAV all Cats visibility to RVR 5000.

MALSR

MISSED APPROACH: Climb to 3000 direct MAFAF and left turn via track 267° to MARNA and hold.

ATIS 124.85	NORCAL APP CON 133.0 251.15	SALINAS TOWER ★ 119.525 (CTAF) 239.3	GND CON 121.7	UNICOM 122.95
-----------------------	---------------------------------------	--	-------------------------	-------------------------



3000	MAFAF	 tr 267°	MARNA	VGSI and RNAV glidepath not coincident (VGSI Angle 3.00/TCH 61).
				
				
				JECCO
				5900
				Procedure Turn NA
				GP 3.00° TCH 50
14.7 NM 3.1 NM 2.9 NM				
CATEGORY	A	B	C	D
LPV DA	282/24 200 (200-½)			
LNAV/ VNAV DA	478/40 396 (400-¾)			